

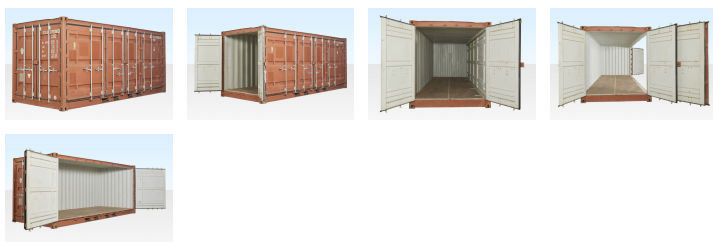
USED 20FT OPEN SIDE / FULL SIDE ACCESS CONTAINER

Quickfind Code: 1001

Part Number: SALE OPEN SIDED 20FT GRADE A

£6,500.00 (exc. VAT)

£7,800.00 (inc. VAT)



PRODUCT DETAILS

Our used 20ft open side shipping containers have a pair of double hinged doors along one side of the container giving full side access (FSA) – as well as a pair of double doors at the end.

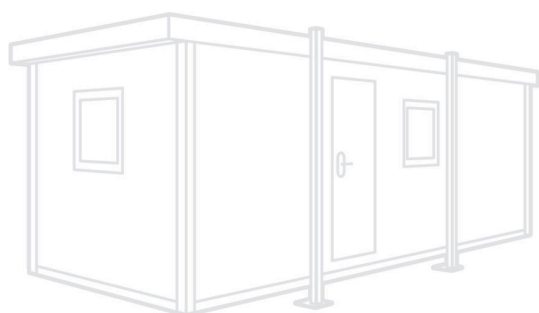
These FSA containers are available for sale online or by contacting our friendly container sales team.

USED 20FT OPEN SIDED CONTAINER FEATURES

- Used – Wind & Watertight
- CSC plated (gross weight) max: 24 ton
- All Corten Steel construction
- One Pair double doors at end & One pair double hinged doors along one side
- Two locking bars on each door
- 2 x forklift pockets on each side
- 28mm Marine Plywood Floor on steel cross members
- 8 Vents

PRODUCT SPECIFICATIONS

External Length (m)	6.06
External Width (m)	2.44
External Height (m)	2.59
Internal Length (m)	5.90
Internal Width (m)	2.29
Internal Height (m)	2.39
Door Width (m)	2.23
Side Door Width (m)	5.82
Door Height (m)	2.14
Weight (kg)	3120
Floor Type	28mm Marine Ply



PRODUCT OPTIONS:

The following optional items can be added to this product:

Electrical Socket Fitted – 3 Pin Plug/Male (32 Amp)	£78.00 (exc. VAT) £93.60 (inc. VAT)
Lockbox	£55.00 (exc. VAT) £66.00 (inc. VAT)
Install Pedestrian Door	£671.00 (exc. VAT) £805.20 (inc. VAT)
Grafo Therm Coating (20ft)	£210.00 (exc. VAT) £252.00 (inc. VAT)
Standard Electrics Pack – 20ft	£615.00 (exc. VAT) £738.00 (inc. VAT)
Upgrade Electrics Pack – Heated – 20ft	£508.00 (exc. VAT) £609.60 (inc. VAT)

